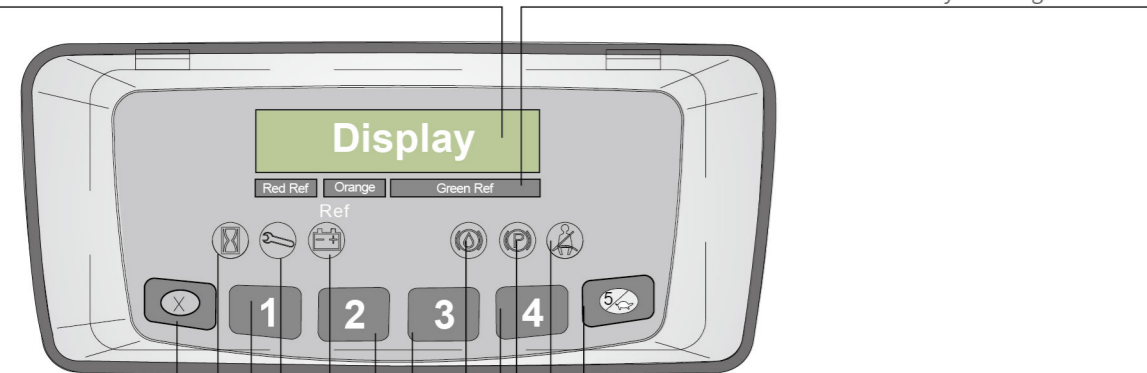


ZAPI SMART interactive multi-function LCD instrument

Alphanumeric display Battery discharge indicator



- Keyboard button :Enter
- Low speed LED
- Keyboard button :Roll up
- Failure alarm LED
- Low battery LED
- Keyboard button :Roll down
- Keyboard button :Out / Driving mode selection button
- Seat switch LED
- Hand brake status LED
- Keyboard button :Set down
- Oil position LED (NO USE)
- Keyboard button :Set up

ZAPI Display

The reliable special instrument gives a complete display of the key information, like operating status, fault detection, etc. It ensures the operator predominate the vehicle status more intuitive and convenient.

Standard configuration Optional

Wide view mast	Back view mirror	Cab	Fire extinguisher
Standrad fork	Reversing buzzer	Windshield	Full free mast
fork carriage	horn	Alarm lamp	Optional attachments
Backrest	Headlight	Rear work light	Customer referred color
Two-spool control valve	Rear combination lamps	Charger	
Battery group	Emergency stop switch	FAAM battery	
Standrad seat	Visual message oil filter	HOPPECKE battery	
Overhead guard	Emergency brake	Full suspension seat	
Overhead guard raincoat	Motor	No traces of solid tire	
LCD combined display	Mast buffer device	Sleeve on fork	
Solid tyre	Cornering speed limiting device	Widened fork holder	
Traction bar		Tilt cylinder protection sleeve	
Attached tools		Steering cylinder protection sleeve	

6-7 t
H series
AC Electric Forklift Truck



Mast rise and fall ends automatically slow down

The innovative design Mast rise and fall ends automatically slow down , to reduce the impact and improve comfort.



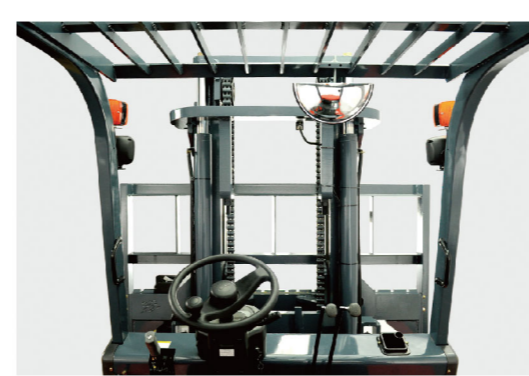
Goods decline in power generation

Has goods decline in power generation, to be able to maximize the recovery of energy of the system, extended battery life, and reduce the battery capacity.



A reliable mast

The high internal-qualified mast confirmedly ensures the safety of the operator, truck and cargo. Standard configuration of the wide-view mast enlarges operators' view effectively, and ensures loading /unloading operations more reliable.

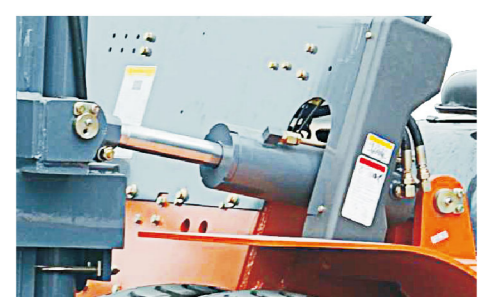


- ✓ Using the best German steel material for triplex mast
- ✓ The frame of mast has more strength basing on the enlarged channel interface.

HELI has the most professional R&D base of cylinders, where we take advantage of the advanced manufacturing technologies and detecting means to ensure the reliability of all cylinders of the hydraulic system.

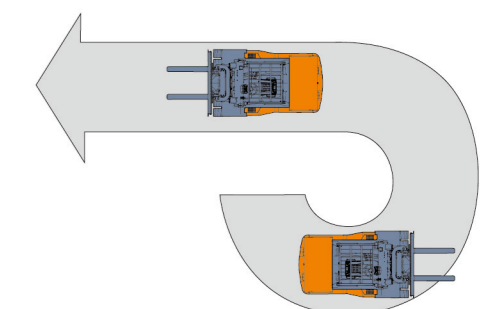
- ✓ Standard tilt cylinder by HELI
- ✓ Standard lift cylinder by HELI
- ✓ Standard steering cylinder by HELI
- ✓ Self-locking tilt cylinder
- ✓ Standard hydraulic circuit filter
- ✓ Speed buffer device on lifting system

A reliable hydraulic system



Traveling turn automatic speed limit function

Traveling turn automatic speed limit, making vehicles safer.



Electronic control layout is simple, elegant, and easy maintenance

The truck equipped with more intelligence functions not only ensures the safety performance , but also improves the efficiency and reduces energy consumption.

- ✓ AC traction controller.
- ✓ Presence of driver sensing system.
- ✓ Standrad CAN BUS.
- ✓ Emergency power off the main circuit.
- ✓ Self-braking on ramp.
- ✓ Preventing abnormality operating.
- ✓ Electric controller self-protecting.
- ✓ Speed selection function (normal/cutback) .

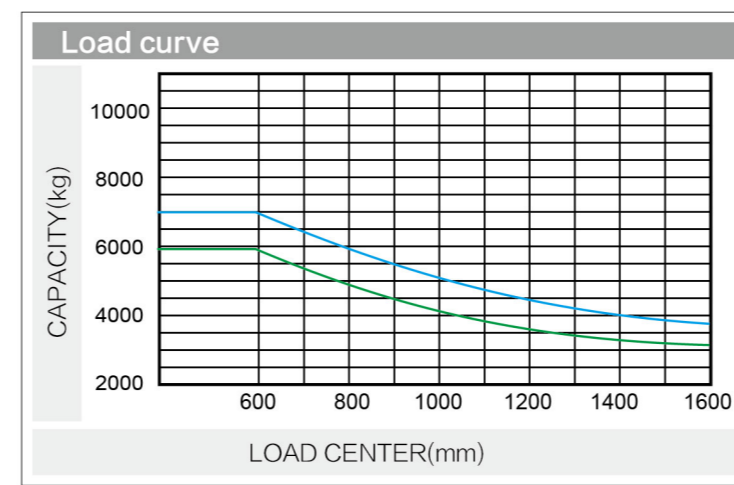
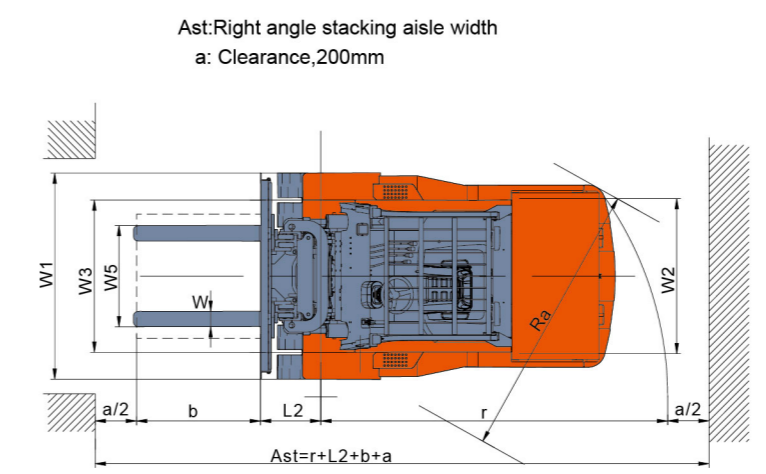
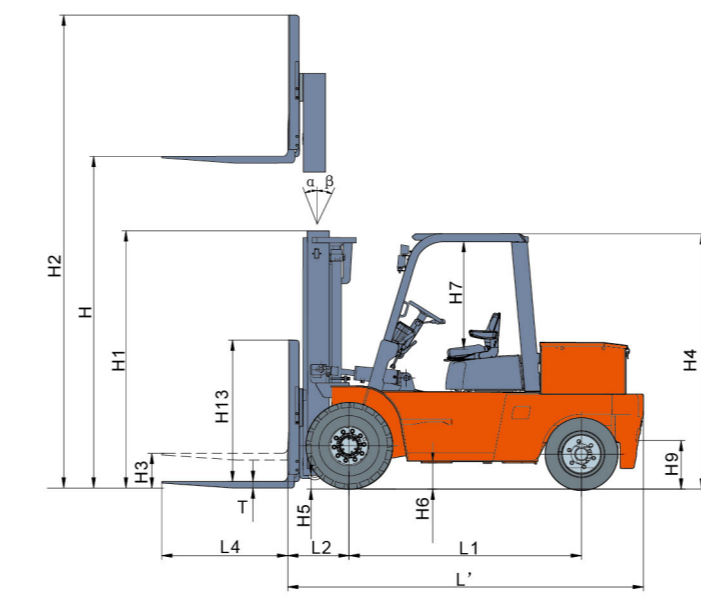


H 6-7t AC Electric Forklift Truck



Manufacturer's Data and Design Characteristics				
Characteristics				
1.01	Manufacture's Name	HELI		
1.02	Model Designation	CPD60	CPD70	
1.03	Configuration Number	HA2	HA2	
1.04	Load Capacity	Q(kg)	6000	7000
1.05	Load Center	c(mm)	600	600
1.06	Power Type	Battery		
1.07	Operator Type	Seated		
1.08	Wheelbase	L1(mm)	2245	2245
Wheels & Tyres				
2.01	Tyre Type	Pneumatic+Superelastic		Pneumatic+Superelastic
2.02	Tyres Number (Front/Rear)	4/2		4/2
2.03	Tread(centre of tyre),front	W3 (mm)	1470	1470
2.04	Tread(centre of tyre),rear	W2 (mm)	1500	1500
2.05	Tyre Size, Front	8.25-15-14PR		8.25-15-14PR
2.06	Tyre Size, Rear	28x9-15		28x9-15
Dimensions				
3.01	Load Distance	L2(mm)	595	600
3.02	Mast Tilt Angle,F/R	α/β (°)	6/12	6/12
3.03	Height with Mast Lowered	H1(mm)	2500	2500
3.04	Free Lift	H3(mm)	200	200
3.05	Standard Lift Height	H(mm)	3000	3000
3.06	Height with Mast Extended	H2(mm)	4400	4400
3.07	Coupler height	H9(mm)	425	425
3.08	Overhead Guard Height	H4(mm)	2450	2450
3.09	Overhead Guard clearance (from ofseat)	H7(mm)	1120	1120
3.10	Backrest height (from upper face of forks)	H13(mm)	1350	1345
3.11	Fork Size T×W×L	T/W/L4(mm)	60×150×1220	65×150×1220
3.12	Lateral fork adjustment outside of (Max./Min.)	W5(mm)	1845/300	1845/300
3.13	Fork Carriage ISO 2328		4A	4A
3.14	Length to fork face	L'(mm)	3440	3440
3.15	Overall Width	W2(mm)	1994	1994
3.16	Ground Clearance at mast ,Loaded	H5(mm)	200	200
3.17	Ground Clearance at centre of wheelbase ,Loaded	H6(mm)	254	254
3.18	Outside Turning Radius	r (mm)	3440	3440
3.19	Min.intersecting aisle(clearance:200mm)	Ra(mm)	3370	3370
3.20	Right angle stacking aisle width (Palletsize 1200x1200mm, clearance:200mm)	Ast(mm)	5430	5430
Performances				
4.01	Travel Speed,with/without load	km/h	15/15.5	14/15.5
4.02	Lifting Speed,with/without load	mm/s	330/500	320/500
4.02	Lowering Speed,with/without load	mm/s	350/320	350/320
4.03	Gradient performance,with/without load	%	18/25	15/20
4.04	Max. draw bar pull with load	N	43900	50730
Weight				
5.01	Total Approximate Weight(W/O battery)	kg	8860/6760	9230/6980
5.02	Axle Loading: Unloaded,Front/Rear	kg	4198/4662	4200/5030
5.03	Axle Loading: Loaded,Front/Rear	kg	13344/1516	14875/1355
Battery				
6.01	Battery Voltage/rated capacity(5h)	V/Ah	80/800	80/920
6.02	battery weight	kg	2100	2250
6.03	Battery standard		DIN	DIN
Motor & Controller				
7.01	Drive Motor - 60 Min. Rating	kW	16.6x2 (AC)	16.6x2 (AC)
7.02	Pump Motor - 60 Min. Rating	kW	16.6x2 (AC)	16.6x2 (AC)
7.03	Drive Motor Control Method		MOSFET/AC	MOSFET/AC
7.04	Pump Motor Control Method		MOSFET/AC	MOSFET/AC
7.05	Service Brake/Parking Brake		Hydraulic/Mechanical	Hydraulic/Mechanical
7.06	Relief Pressure	Mpa	20	20

NOTE:For battery brand and capacity ,please contact with sales or engineers.

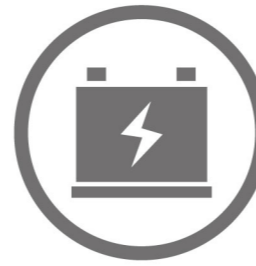


Note: The vertical axis stands for load capacity and the horizontal axis stands for load center which is calculated from the front surface of the forks to the gravity of the standard load. the standard load means a cubic with 1000mm edge length. When mast is tilted forward, using non-standard forks or loading large goods, the load capacity will be reduced. The load capacity of standard mast at different load center can be known from this load chart.

6-7t WIDE VIEW MAST								
Mast model	Max.Fork Height (mm)	Load Capacity (kg)		Overall Mast Height (At Lowered) (mm)		Service Weight With Backrest(kg)		Tilting Angle Fwd/Bwd (deg.)
		CPD60	CPD70	CPD60	CPD70	CPD60	CPD70	
M200	2000	6000	7000	2000		8716	9086	6-12
M250	2500	6000	7000	2250		8780	9150	6-12
M270	2700	6000	7000	2350		8810	9180	6-12
M300	3000	6000	7000	2500		8860	9230	6-12
M330	3300	6000	7000	2650		8910	9280	6-12
M350	3500	6000	7000	2750		8940	9320	6-12
M375	3750	6000	7000	2875		8980	9360	6-12
M400	4000	6000	7000	3050		9150	9530	6-12
M425	4250	6000	7000	3175		9190	9570	6-12
M450	4500	6000	7000	3300		9230	9610	6-12
M475	4750	6000	7000	3425		9270	9650	6-6
M500	5000	6000	7000	3550		9310	9690	6-6
M550	5500	5700	6600	3850		9510	9880	6-6
M600	6000	5400	6400	4100		9590	9960	6-6

6-7t WIDE VIEW FULL FREE 3-STAGE MAST									
Mast model	Max.Fork Height (mm)	Load Capacity (kg)		Overall Mast Height (At Lowered) (mm)		Service Weight With Backrest(kg)		Free lift With Backrest (mm)	Tilting Angle Fwd/Bwd (deg.)
		CPD60	CPD70	CPD60	CPD70	CPD60	CPD70		
ZSM360	3600	5600	6200	2335		9550	9900	910	6-6
ZSM400	4000	5600	6200	2470		9610	9960	1040	6-6
ZSM435	4350	5600	6200	2585		9670	10000	1156	6-6
ZSM480	4800	5600	6200	2740		9860	10190	1310	6-6
ZSM500	5000	5600	6200	2805		9890	10220	1380	6-6
ZSM540	5400	5300	6200	2940		9960	10390	1510	6-6
ZSM600	6000	5000	5600	3140		10050	10570	1710	6-6
ZSM650	6500	4500	5000	3405		10160	10690	1975	6-6
ZSM700	7000	4000	4500	3515		10270	10800	2085	6-6

NOTE: 6I FREE LIFTING HEIGHT WITHOUT BACKREST:+380mm;
7I FREE LIFTING HEIGHT WITHOUT BACKREST:+225mm.



RENEWABLE ENERGY TECHNOLOGIES

With the use of the excellent load-sensing steering system and AC controlling renewable energy technologies, the forklift is more energy-saving and the working hour of the battery is extended by 30%.

