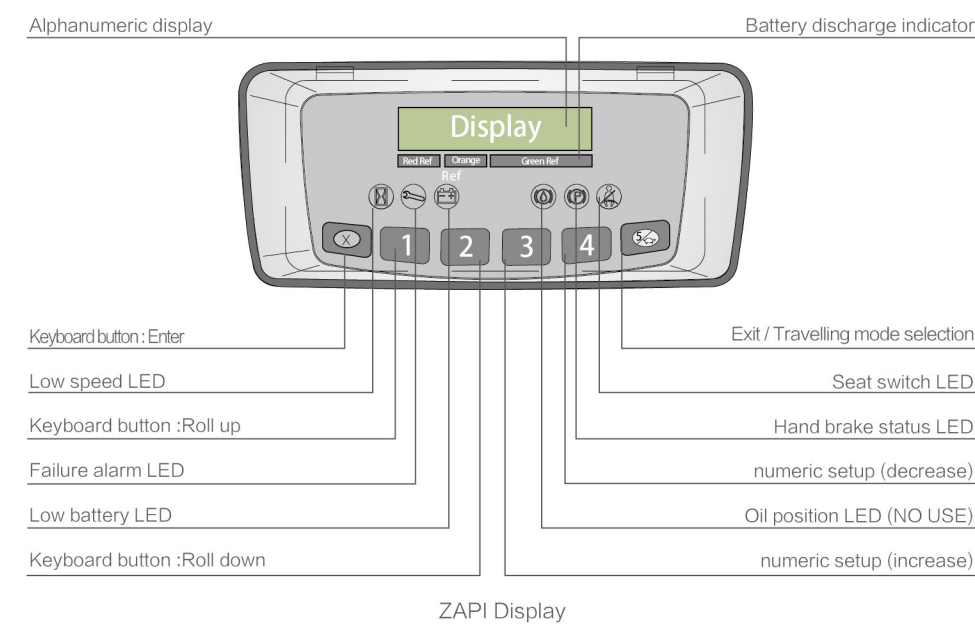


## Reliable special designed instrument

The reliable special instrument gives a complete display of the key information, like operating status, fault detection, etc. It ensures the operator predominate the vehicle status more intuitive and convenient.



## Standard configuration

Wide view mast  
Standrad fork  
fork carriage  
Backrest  
Two-spool control valve  
Lithium battery group  
Standrad seat  
Overhead guard  
Overhead guard raincoat  
LCD combined display  
Solid tyre  
Traction bar  
Driver' s tool  
Rear view mirror  
Backward buzzer  
Horn  
Front lamp  
Rear combined light  
Emergency button  
Oil filter with visible information  
Emergency brake  
Motor  
Mast buffering device  
Speed limit when steering

## Optional device

Cab  
Windshield  
Alarm lamp  
Rear work light  
Charger  
FAAM battery  
HOPPECKE battery  
Full suspension seat  
No traces of solid tire  
Sleeve on fork  
Widened fork holder  
Tilt cylinder protection sleeve  
Steering cylinder protection sleeve  
Fire extinguisher  
OPS system  
Full free mast  
Optional attachments  
Customer referred color



**ANHUI HELI CO., LTD.**  
Add / No.668, FangXing Road, Hefei, China  
Fax / +86-551-63639966

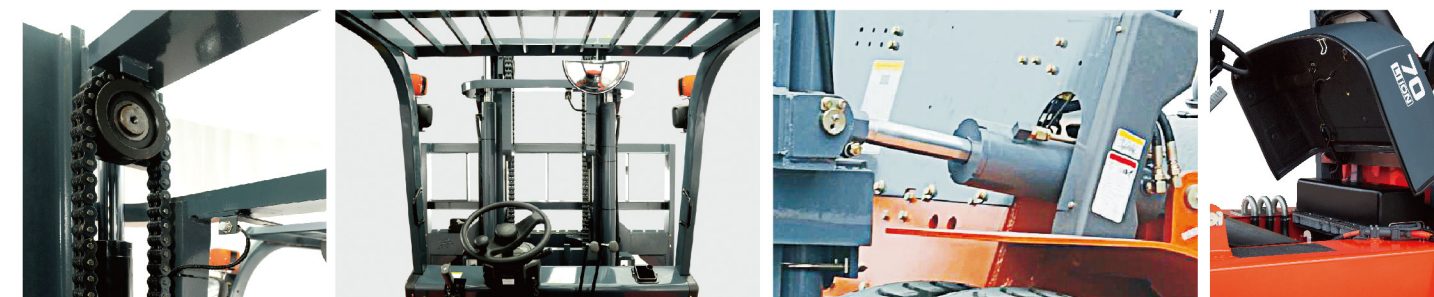
Tel / +86-551-63639068(America); 63639258(Europe);  
63639358(Asia); 63662105(Africa & Middle East);  
63639530(Key Accounts Division); 63662105(Wheel loader)

Design/Print/Cover/Printing 2020/12/14

## 6-7 t LITHIUM H series AC Lithium Battery Forklift Truck



[www.heliforklift.net](http://www.heliforklift.net)



### Automatic slowing down at mast upper and lowering ends

Automatic slowing down at mast upper and lowering ends reduces impact and improves operation comfort.

### A reliable mast

The superior mast confirmedly ensures the safety of the operator, truck and cargo. Standard configuration of the wide-view mast enlarges operators' view effectively, and ensures loading /unloading operations more reliable.

- ✓ Using the superior-quality steel material for mast
- ✓ The frame of mast has more strength basing on the enlarged channel interface.

### A reliable hydraulic system

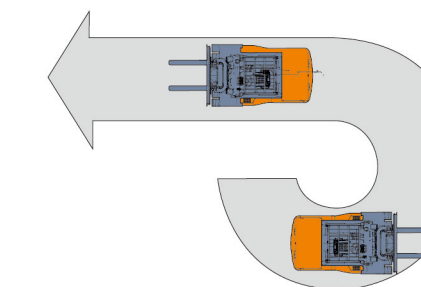
HELI has professional R&D base of cylinders, where we take advantage of the advanced manufacturing technologies and detecting means to ensure the reliability of all cylinders of the hydraulic system.

- ✓ Standard tilt cylinder by HELI
- ✓ Standard lift cylinder by HELI
- ✓ Standard steering cylinder by HELI
- ✓ Self-locking tilt cylinder
- ✓ Standard hydraulic circuit filter
- ✓ Speed buffer device on lifting system

### Electronic control layout is simple, elegant, and easy maintenance

The truck equipped with more intelligence functions not only ensures the safety performance, but also improves the efficiency and reduces energy consumption.

- ✓ AC traction controller.
- ✓ Presence of driver sensing system.
- ✓ Standrad CAN BUS.
- ✓ Emergency power off the main circuit.
- ✓ Operation sequence protection
- ✓ Controller self protection
- ✓ Travelling speed control

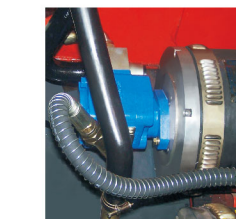


### Automatic speed limit function when steering

Automatic speed limit function when steering improves truck safety.

### Energy recovery

Energy is recovered during goods decline. Through such kind of system energy recovery, battery service life is prolonged and battery capacity is reduced.



### HELI smart fleet management system (optional)

- Vehicle positioning
- Remote diagnosis
- Remote monitoring
- Maintenance reminder
- Battery management
- Statistical form
- Vehicle management
- Identification recognition (optional)
- Weight management (optional)
- Collision management (optional)



# 6-7t

## H series AC Lithium Battery Forklift Truck

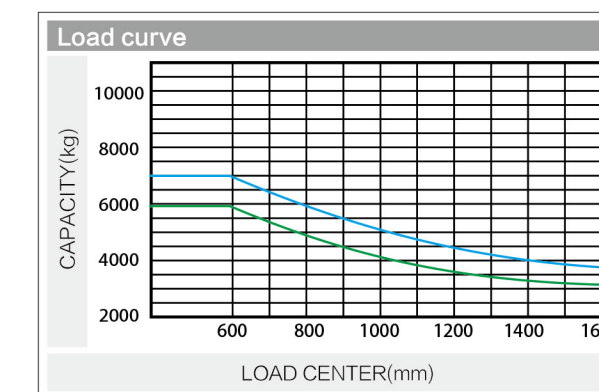
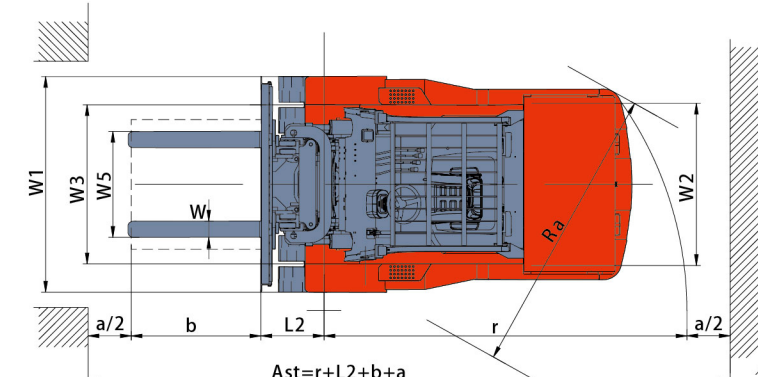
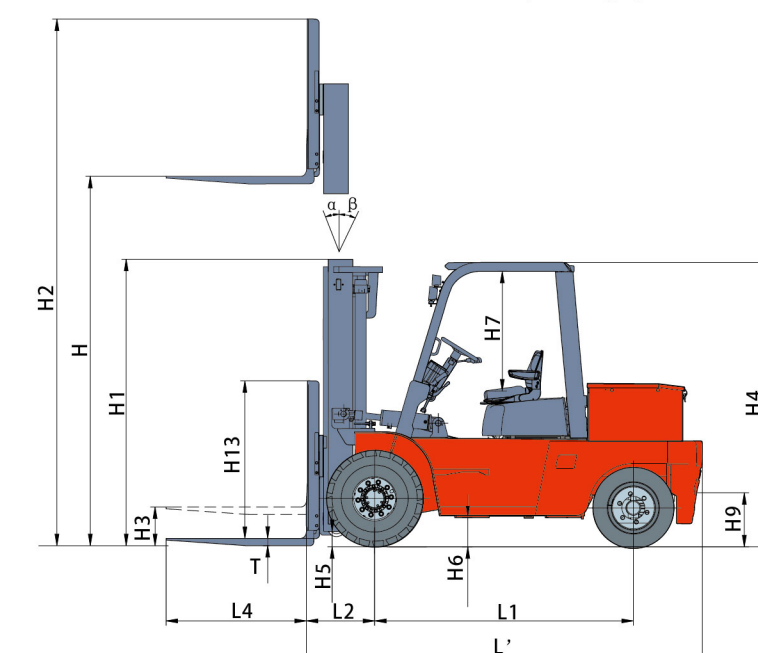


### Manufacturer's Data and Design Characteristics

Characteristics				HELI	
1.01	Manufacturer's Name			CPD60	CPD70
1.02	Model Designation			HA2Li	HA2Li
1.03	Configuration Number				
1.04	Load Capacity	Q	kg	6000	7000
1.05	Load Center	c	mm	600	600
1.06	Power Type			Lithium battery	Lithium battery
1.07	Operator Type			Seated	Seated
1.08	Wheelbase	L1	mm	2245	2245
Wheels & Tyres					
2.01	Tyre Type			Pneumatic+Superelastic	Pneumatic+Superelastic
2.02	Tyres Number (Front/Rear)			4/2	4/2
2.03	Tread (centre of tyre),front	W3	mm	1470	1470
2.04	Tread (centre of tyre),rear	W2	mm	1500	1500
2.05	Tyre Size, Front			8.25-15-14PR	8.25-15-14PR
2.06	Tyre Size, Rear			28x9-15	28x9-15
Dimensions					
3.01	Load Distance	L2	mm	595	600
3.02	Mast Tilt Angle,F/R	$\alpha / \beta$	°	6/12	6/12
3.03	Height with Mast Lowered	H1	mm	2500	2500
3.04	Free Lift	H3	mm	200	200
3.05	Standard Lift Height	H	mm	3000	3000
3.06	Height with Mast Extended	H2	mm	4400	4400
3.07	Coupler height	H9	mm	425	425
3.08	Overhead Guard Height	H4	mm	2450	2450
3.09	Overhead Guard clearance (from ofseat)	H7	mm	1120	1120
3.10	Backrest height (from upper face of forks)	H13	mm	1350	1345
3.11	Fork Size T×W×L4	T×W×L4	mm	60 × 150 × 1220	65 × 150 × 1220
3.12	Lateral fork adjustment outside of (Max./Min.)	W5	mm	1845/300	1845/300
3.13	Fork Carriage ISO 2328			4A	4A
3.14	Length to fork face	L'	mm	3440	3440
3.15	Overall Width	W1	mm	1994	1994
3.16	Ground Clearance at mast ,Loaded	H5	mm	200	200
3.17	Ground Clearance at centre of wheelbase ,Loaded	H6	mm	254	254
3.18	Outside Turning Radius	r	mm	3440	3440
3.19	Min.intersecting aisle (clearance:200mm)	Ra	mm	3370	3370
3.20	Right angle stacking aisle width (Pallet size 1200x200mm, clearance:200mm)	Ast	mm	5430	5430
Performances					
4.01	Travel Speed,with/without load		km/h	15/15	14/15
4.02	Lifting Speed,with/without load		mm/s	360/500	350/500
4.03	Lowering Speed,with/without load		mm/s	350/320	350/320
4.04	Gradient performance,with/without load		%	18/25	16/21
4.05	Max. draw bar pull with load		N	43900	50730
Weight					
5.01	Total Approximate Weight (W/O battery)		kg	8770/8070	9360/8660
5.02	Axle Loading: Unloaded,Front/Rear		kg	4399/4371	4238/5122
5.03	Axle Loading: Loaded,Front/Rear		kg	13545/1225	14913/1447
Battery					
6.01	Battery Voltage/rated capacity (5h)		V/Ah	80/813	80/813
6.02	Battery weight		kg	700	700
Motor & Controller					
7.01	Drive Motor - 60 Min. Rating		kW	30 (AC)	30 (AC)
7.02	Pump Motor - 60 Min. Rating		kW	16.6x2 ( AC)	16.6x2 ( AC)
7.03	Drive Motor Control Method			MOSFET/AC	MOSFET/AC
7.04	Pump Motor Control Method			MOSFET/AC	MOSFET/AC
7.05	Service Brake/Parking Brake			Hydraulic/Mechanical	Hydraulic/Mechanical
7.06	Relief Pressure		Mpa	20	20

NOTE: for battery brand and capacity, please contact with sales or engineers.

Ast: Right angle stacking aisle width  
a:Clearance,200mm  
b:Pallet(load length)



CPD60 CPD70

**Note:** The vertical axis stands for load capacity and the horizontal axis stands for load center which is calculated from the front surface of the forks to the gravity of the standard load. The standard load means a cubic with 1000mm edge length. When mast is tilted forward, using non-standard forks or loading large goods, the load capacity will be reduced. The load capacity of standard mast at different load center can be known from this load chart.

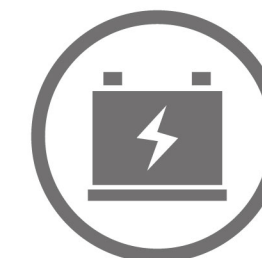
### WIDE VIEW MAST

Mast model	Max.Fork Height (mm)	Load Capacity (kg)		Overall Mast Height (At Lowered) (mm)		Service Weight With Backrest(kg)		Tilting Angle Fwd/Bwd (deg.)
		CPD60	CPD70	Mast Lowered	Fork Lifted (With Backrest)	CPD60	CPD70	
M200	2000	6000	7000	2000	3355	8626	9216	6-12
M250	2500	6000	7000	2250	3855	8690	9280	6-12
M270	2700	6000	7000	2350	4055	8720	9310	6-12
M300	3000	6000	7000	2500	4355	8770	9360	6-12
M330	3300	6000	7000	2650	4655	8820	9410	6-12
M350	3500	6000	7000	2750	4855	8850	9450	6-12
M375	3750	6000	7000	2875	5105	8890	9490	6-12
M400	4000	6000	7000	3050	5355	9060	9660	6-12
M425	4250	6000	7000	3175	5605	9100	9700	6-12
M450	4500	6000	7000	3300	5855	9140	9740	6-12
M475	4750	6000	7000	3425	6105	9180	9780	6-6
M500	5000	6000	7000	3550	6355	9220	9820	6-6
M550	5500	5700	6600	3850	6855	9420	10010	6-6
M600	6000	5400	6400	4100	7355	9500	10090	6-6

### WIDE VIEW FULL FREE 3-STAGE MAST

Mast model	Max.Fork Height (mm)	Load Capacity (kg)		Overall Mast Height (At Lowered) (mm)		Service Weight With Backrest(kg)		Free Lifting Height (With Backrest) (mm)	Tilting Angle Fwd/Bwd (deg.)
		CPD60	CPD70	Mast Lowered	Fork Lifted (With Backrest)	CPD60	CPD70		
ZSM360	3600	5600	6200	2335	4955	9460	10030	910	6-6
ZSM400	4000	5600	6200	2470	5355	9520	10090	1040	6-6
ZSM435	4350	5600	6200	2585	5705	9580	10130	1156	6-6
ZSM480	4800	5600	6200	2740	6155	9770	10320	1310	6-6
ZSM500	5000	5600	6200	2805	6355	9800	10350	1380	6-6
ZSM540	5400	5300	6200	2940	6755	9870	10520	1510	6-6
ZSM600	6000	5000	5600	3140	7355	9960	10700	1710	6-6
ZSM650	6500	4500	5000	3405	7855	10070	10820	1975	6-6
ZSM700	7000	4000	4500	3515	8355	10180	10930	2085	6-6

Note: 6: Free Lifting Height Without Backrest:+380mm;  
7: Free Lifting Height Without Backrest:+225mm.



### RENEWABLE ENERGY TECHNOLOGIES

With the use of the excellent load-sensing steering system and AC controlling renewable energy technologies, the forklift is more energy-saving and the working hour of the battery is extended by 15%.



15%