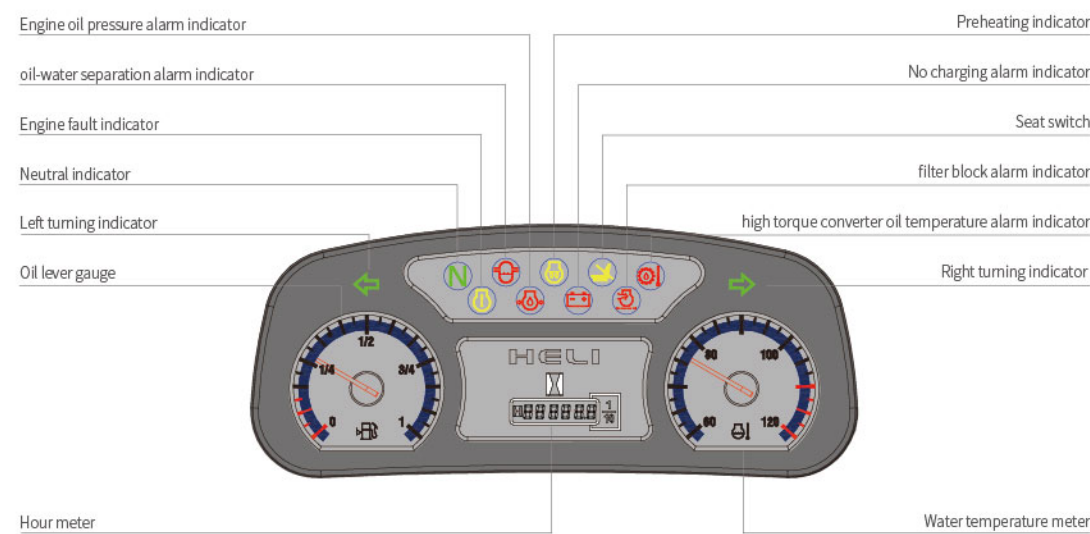


## Reliable special designed instrument



The reliable special instrument gives a complete display of the vital information, like operation status, fault detection, etc. It ensures the operator predominate the vehicle status more intuitive and convenient.

- ✓ Stepping motor core
- ✓ Electrical safety standard meets CE requirements

## Standard configuration

- Hour meter
- Horn
- Oil pressure alarm
- Three-spool control valve
- Power steering
- Aluminum pedal pad
- Backrest
- Back view mirror
- LED front combined lights
- Transmission oil filter
- Engine flameout device
- Parking brake cable
- Water temperature meter
- Attached tools
- LED Rear combined lights
- Reversing buzzer
- Self-locking tilt valve
- Tilt adjustable steering column
- Endurance board awing
- Standard forks
- Central Control Box
- Hydraulic circuit oil filter
- Speed limiting valve
- Oil meter
- Charging indicator
- Wide view mast
- Air intake device
- Durable tyre
- Operation handle
- Traction pin
- Front lamp
- Hydraulic oil gauge
- Overhead guard
- Torque converter oil dipstick
- Combined meter
- Engine fault indicator

## Optional

- Cab
- Rotating warning light
- Vertical exhaust
- Double air filter
- Suspension seat
- Extended fork sleeve
- Heater
- Solid tyre
- Widening fork carriage
- Windglass
- Purifying muffler
- Fire muffler
- Fire extinguisher
- Rear lights
- Air conditioning (some models)
- Electro-hydraulic switch
- OPS driving control
- Torque converter oil temperature meter
- Tilt cylinder sleeve
- Steering cylinder sleeve
- User-specified color
- Optional attachments
- Steel protective fences
- Dual tires and protective devices
- LPG with the flip seat
- LPG single and dual-fuel system
- Power brake
- Smart fleet management system (optional)

## 2-3.5 t

### H2000 series Internal Combustion Counterbalanced Forklift Truck



[www.heliforklift.net](http://www.heliforklift.net)

## H2000 SERIES 2-3.5 t

### A reliable Drive system



The transmission box designed and manufactured by Heli specially for the model is equipped on the truck. As the most reliable transmission system produced by Heli, it has been validated by over twenty years' experience in World market. Meanwhile, various ancillary devices of the power system ensure the reliability effectively.

- Durable transmission
- Equipped with the intake system & intake silencer
- Optional air filter pressure alarm device
- Automatic engine preheating system
- Cyclone Air Filter
- Lost foam casting
- Meeting China III (GB20891-2014)
- Environment friendly engine
- lower vibration and noise

### A reliable mast

The superior mast confirmedly ensures the safety of the operator, truck and cargo. Standard configuration of the wide-view mast enlarges operators' view effectively, and ensures loading /unloading operations more reliable.

- The frame of mast has more strength basing on the enlarged channel interface.
- Clear visibility for standard wide-view mast.
- The channel with own patented technology has the first-rate quality.

### HELI smart fleet management system (optional)

- Vehicle positioning
- Remote diagnosis
- Remote monitoring
- Maintenance reminder
- Battery management
- Statistical form
- Vehicle management
- Identification recognition (optional)
- Weight management (optional)
- Collision management (optional)



### A reliable hydraulic system



HELI has the most professional R&D base of cylinders, where we take advantage of the advanced manufacturing technologies and detecting means to ensure the reliability of all cylinders of the hydraulic system.

- Standard tilt cylinder by Heli
- Standard lift cylinder by Heli
- Standard steering cylinder by Heli
- Self-locking tilt cylinder
- Standard hydraulic circuit filter
- Speed buffer device on lifting system

### A reliable steering system

The steering system with new technologies not only provides a smoother swerve and faster positioning & steering, but also effectively ensures operators' safety.

- Wearable tyre
- Smaller turning radius
- Full hydraulic power steering



### Comfortable operation space

Large operation space with ergonomic-design and configuration make the operation more comfortable & convenient, and effectively enhance the efficiency & safety of operation.

- Noise isolating and buffering materials are filled between engine hood and frame;
- Patented engine hood with new noise isolating and buffering materials
- Well-designed anti-slip mat
- Easy reading meter
- Storage box
- Flexible connection between exhausting system and frame



**ANHUI HELI CO., LTD.**  
Add / No.668, FangXing Road, Hefei, China  
Fax / +86-551-63639966

Tel / +86-551-63639068(America); 63639258(Europe);  
63639358(Asia); 63662105(Africa & Middle East);  
63639530(Key Accounts Division); 63662105(Wheel loader)



### Manufacturer and technical parameters

Characteristics		HELI							
1.01	Manufacturer	HELI							
1.02	Model	CPC20	CPCD20	CPC25	CPCD25	CPC30	CPCD30	CPC35	CPCD35
1.03	Power unit	Diesel							
1.04	Rated Capacity	kg	2000	2500	3000	3500			
1.05	Load Center	mm	500						
1.06	Operation	Driver seated							

Dimensions										
2.01	Max.Lifting height	H	mm							3000
2.02	Height mast retracted(upright)	H1	mm	1995	1995	2070	2180			
2.03	Overall max.lifting height (with backrest)	H2	mm	4030	4030	4225	4225			
2.04	Free lift height	H3	mm	70	70	65	65			
2.05	Overall height(overhead guard)	H4	mm	2070	2070	2090	2090			
2.06	Min.ground clearance under mast	H5	mm	110	110	135	135			
2.07	Overhead Guard clearance(from face of seat)	H6	mm	1035						
2.08	Coupler height	H9	mm	290	290	310	310			
2.09	Backrest height(from upper face of forks)	H13	mm	1000	1000	1227	1177			
2.10	Overall length(with forks)	L	mm	3432	3657	3762	3783			
2.11	Overall length(without forks)	L'	mm	2512	2587	2707	2728			
2.12	Wheel base	L1	mm	1600	1600	1700	1700			
2.13	Front overhang	L2	mm	472	472	477	495			
2.14	Rear overhang	L3	mm	440	515	515	515			
2.15	Overall width	W1	mm	1150	1150	1225	1225			
2.16	Tread(front)	W3	mm	970	970	1000	1000			
2.17	Tread(rear)	W2	mm	970	970	970	970			
2.18	Lateral fork adjustment outside of fork(Max./Min.)	W5	mm	1030/244	1030/244	1060/250	1060/250			
2.19	Outside turning radius	r	mm	2170	2240	2400	2420			
2.20	Inside turning radius	r'	mm	160	160	200	200			
2.21	Min.intersecting aisle	Ra	mm	2200	2280	2380	2400			
2.22	Tilting angles(forward/backward)	$\alpha/\beta$	deg	6/12						
2.23	Fork dimensions(L4xWxT)	L4xWxT	mm	920x122x40	1070x122x40	1070x125x45	1070x125x50			

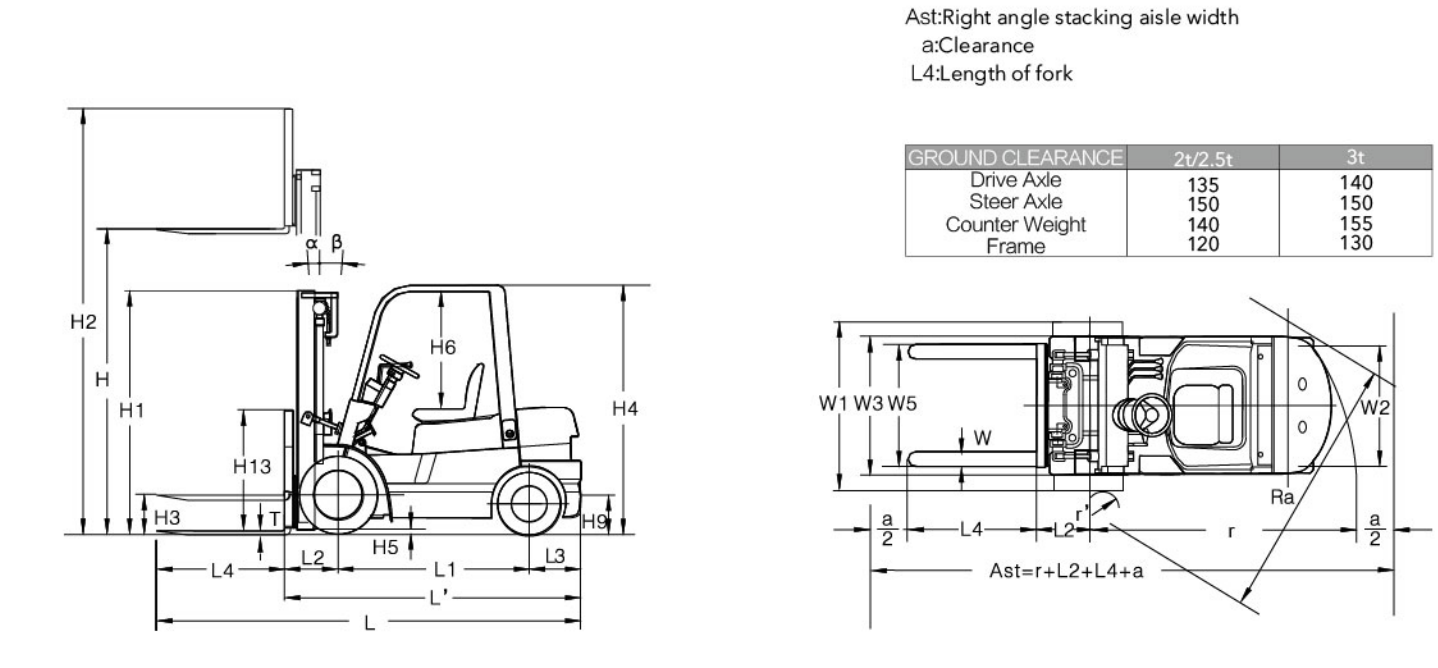
Performance										
3.01	Max. Traveling speeds(With/Without load)	km/h	17/19				18/19		19/19	
3.02	Lifting Speeds(With/Without load)	mm/s	570/600				455/480		360/380	
3.03	Lowering Speeds(With/Without load)	mm/s	450/550				450/500		350/400	
3.04	Max. Draw-bar pull,(With/Without load)	kN	17/12.5	19/12.5	16.5/11.8	18.5/11.8	18.6/13.4	19.5/13.4	17.8/14.3	19.6/14.3
3.05	Max. Negotiable Gradient(With/Without load)	%	21/20	24/22	18/20	24/22	15/21	21/20	15/20	16/21

Weights										
4.01	Service Mass	kg	3380	3700	4300	4700				
4.02	Load Wheel with load(Front/Rear)	kg	4770/610	5460/740	6420/880	7390/810				
4.03	Load Wheel without load(Front/Rear)	kg	1600/1780	1510/2190	1710/2590	1830/2870				

Tyres									
5.01	Wheels number front/rear(x=driven)	2X/2							
5.02	Tyre Type	Pneumatic							
5.03	Tyre size(front)	7.00-12-12PR				28x9-15-14PR			
5.04	Tyre size(rear)	6.00-9-10PR				6.50-10-10PR			
5.05	Service Brake	Hydraulic-Foot Pedal							
5.06	Parking Brake	Mechanical-Hand Lever							

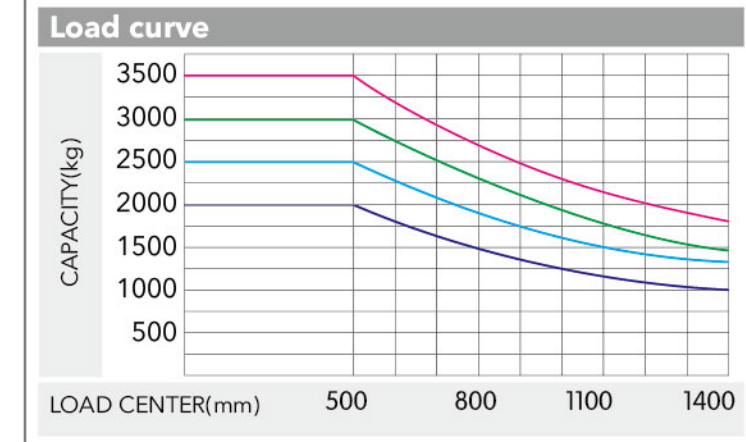
### Engine Model and Main Specification for Option

Engine Model	Rated power/ Rotating speed (Kw/rpm)	Rated power/ Rotating speed (Nm/rpm)	Engine Capacity(L)	Number of cylinders	Emission	Power unit
DACHAI CA498-06T3R-A122	45/2500	196/1800	3.168	4-98x105	China Stage III	Diesel
QUANCHAI 4C2-50V31	36.8-2500	157/1800	2.79	4-92x105	China Stage III	Diesel
XINGCHANG 4D27G31	36.8-2500	156/1700-1900	2.67	4-90x105	China Stage III	Diesel
ISUZU 4JG2PE-01	36/2450	175/1700	3.059	4-95.4x107	Euro Stage IIIA / China Stage III	Diesel
ISUZU C240PKJ-30	35.4/2500	139.9/1800	2.369	4-86x102	Euro Stage IIIA / China Stage III	Diesel
Kubota V3600	46.9/2400	209.8/1600	3.62	4-98x120	Euro Stage IIIA / Epa Interim Tier 4	Diesel
Kubota V2403	34.1/2400	155.9/1600	2.434	4-87x102.4	Euro Stage IIIA / China Stage III / Epa Interim Tier 4	Diesel
XIN CHANG C490BPG-25	36.8/2650	156/1800-2000	2.67	4-90x105	Euro Stage IIIA	Diesel
JMC HJ493G	36.5/2500	165/1800	2.771	4-93x102	Euro Stage IIIA	Diesel
DACHAI CA498-97	45/2500	196/1800	3.168	4-98x105	China Stage II	Diesel
JMC HJ493	36.5/2500	156/1800	2.771	4-93x102	China Stage II	Diesel
XINGCHANG C490BPG-200	40/2650	160/1800-2000	2.67	4-90x105	China Stage II	Diesel
QUANCHAI QC490GP	39/2650	160/1800	2.67	4-90x105	China Stage II	Diesel



### Engine Model and Main Specification for Option

Engine Model	Rated power/ Rotating speed (Kw/rpm)	Rated power/ Rotating speed (Nm/rpm)	Engine Capacity(L)	Number of cylinders	Emission	Power unit
NISSAN K21	31.2/2200	143.7/1600	2.065	4-89x83	-	Gasoline/LPG
NISSAN K25	37.4/2400	176.5/1600	2.488	4-89x100	-	Gasoline/LPG



**Note:** The vertical axis stands for load capacity and the horizontal axis stands for load center which is calculated from the front of the fork. The base point of the standard load refers to the center position of the cube with 1000mm length of side. When mast is tilted forward, nonstandard fork usage or load with over wide goods, load capacity will be reduced. Different load capacity in different load center can be known in time through load chart.

### 2-3.5t WIDE VIEW MAST

Mast model	Max.fork height (mm)	Capacity at 500mm(Load center)(kg)				mast overall height(fork to the ground)			mast tilting angle $\alpha/\beta$ (°)	Service Weight (kg)			
		CPC20/CPCD20	CPC25/CPCD25	CPC30/CPCD30	CPC35/CPCD35	2-2.5t	3t	3.5t		CPC20/CPCD20	CPC25/CPCD25	CPC30/CPCD30	CPC35/CPCD35
M200	2000	2000	2500	3000	3500	1495	1570	1680	6/12	3285	3605	4205	4590
M250	2500	2000	2500	3000	3500	1745	1820	1930	6/12	3335	3655	4250	4645
M300	3000	2000	2500	3000	3500	2145	2220	2330	6/12	3405	3725	4330	4730
M350	3500	2000	2500	3000	3500	2245	2320	2430	6/12	3430	3750	4350	4750
M370	3700	2000	2500	3000	3500	2345	2420	2530	6/6	3445	3765	4370	4775
M400	4000	2000	2500	3000	3500	2545	2620	2730	6/6	3510	3830	4450	4860
M425	4250	1900	2250	2850	3100	2670	2745	2855	6/6	3535	3855	4480	4885
M450	4500	*2000	*2500	*3000	*3200	2795	2870	2980	6/6	3555	3875	4500	4915
M500	5000	*1600	*1650	*2400	*2500	3045	3120	3230	6/6	3605	3925	4555	4970
M550	5500	*1700	*2200	*2850	*2850	3345	3420	3530	*3/6	3685	4005	4655	5075
M600	6000	*1500	*1800	*2200	*2300	3595	3670	3780	*3/6	3735	4055	4700	5125

Note: (1) \*stands for the rated capacity when the front tyre is double-tyre. (2) When the front tyre of the 2-3.5t truck is double tyre, the service weight of the truck is the weight in the table plus 110kg.

### 2-3.5t WIDE VIEW FULL FREE 2-STAGE MAST

Mast model	Max.fork height (mm)	Capacity at 500mm(Load center)(kg)				mast overall height (fork to the ground)(mm)			free lifting height (with backrest)(mm)			mast tilting angle $\alpha/\beta$ (°)	Service Weight (kg)			
		CPC20/CPCD20	CPC25/CPCD25	CPC30/CPCD30	CPC35/CPCD35	2-2.5t	3t	3.5t	2-2.5t	3t	3.5t		CPC20/CPCD20	CPC25/CPCD25	CPC30/CPCD30	CPC35/CPCD35
ZM200	2000	2000	2500	3000	3500	1495	1570	1680	495	340	340	6/12	3330	3640	4240	4640
ZM250	2500	2000	2500	3000	3500	1745	1820	1930	745	590	590	6/12	3370	3690	4300	4700
ZM300	3000	2000	2500	3000	3500	2145	2220	2330	955	840	840	6/12	3430	3750	4360	4760
ZM330	3300	2000	2500	3000	3500	2145	2220	2330	1145	990	990	6/12	3460	3780	4380	4780
ZM350	3500	2000	2500	3000	3500	2245	2320	2430	1245	1090	1090	6/6	3480	3810	4400	4800
ZM370	3700	2000	2500	3000	3500	2345	2420	2530	1370	1190	1190	6/6	3510	3830	4420	4820
ZM400	4000	2000	2500	3000	3500	2545	2620	2730	1545	1390	1390	6/6	3590	3910	4500	4900
ZM425	4250	1900	2250	2850	3100	2670	2745	2855	1670	1515	1515	6/6	3620	3940	4530	4930
ZM450	4500	*1900	*2400	*3000	*3050	2795	2870	2980	1795	1640	1640	6/6	3640	3960	4550	4950
ZM500	5000	*1600	*1650	*2400	*2500	3045	3120	3230	2045	1890	1890	6/6	3700	4020	4605	5005
ZM550	5500	*1700	*2200	*2850	*2850	3345	3420	3530	2345	2190	2190	*3/6	3800	4120	4730	5130
ZM600	6000	*1500	*1800	*2200	*2300	3595	3670	3780	2595	2440	2440	*3/6	3840	4160	4775	5175

Note: (1) \*stands for the rated capacity when the front tyre is double-tyre. (2) When the front tyre of the 2-3.5t truck is double tyre, the service weight of the truck is the weight in the table plus 110kg. (3) The free lifting height (without backrest) of the 2-2.5t truck is the height (with backrest) in the table plus 430mm. The free lifting height (without backrest) of the 3t truck is the height (with backrest) in the table plus 567mm. The free lifting height (without backrest) of the 3.5t truck is the height (with backrest) in the table plus 509mm.

### 2-3.5t WIDE VIEW FULL FREE 3-STAGE MAST

Mast model	Max.fork height (mm)	Capacity at 500mm(Load center)(kg)				mast overall height (fork to the ground)(mm)			free lifting height (with backrest)(mm)			mast tilting angle $\alpha/\beta$ (°)	Service Weight (kg)			
		CPC20/CPCD20	CPC25/CPCD25	CPC30/CPCD30	CPC35/CPCD35	2-2.5t	3t	3.5t	2-2.5t	3t	3.5t		CPC20/CPCD20	CPC25/CPCD25	CPC30/CPCD30	CPC35/CPCD35
ZSM360	3600	2000	2400	2900	3250	1800	1870	1870	800	640	640	6-6	3495	3835	4510	4770
ZSM400	4000	1900	2200	2900	3250	1950	2020	2020	950	790	790	6-6	3540	3875	4540	4800
ZSM435	4350	*1900	*2400	*2900	*3050	2050	2120	2120	1050	890	890	6-6	3570	3920	4560	4820
ZSM450	4500	*1800	*2300	*2850	*2950	2100	2170	2170	1100	940	940	6-6	3580	3965	4580	4840
ZSM470	4700	*1720	*2000	*2650	*2700	21										