

CPCD 200-460

G系列20-46吨内燃平衡重式叉车
G Series Balance Weight Type Forklift



HELI
中国合力 提升未来



CPCD 200-460
G系列20-46吨内燃平衡重式叉车
G Series Balance Weight Type Forklift

设计印刷 孚可立印务 heli copyright 181026



安徽合力股份有限公司
ANHUI HELI CO., LTD.

地址: 合肥市经开区方兴大道668号
咨询电话: 0551-63689111
融资租赁: 0551-63689365
传真: 0551-63689365
网址: <http://www.helichina.com>
邮箱: sale@helichina.com

ADD:NO.668FangxingStreet,EconomicalDevelopmentZone,Hefei,P.R.China
TEL:(86 551)63639068(America)63639258(Europe) 63639358(Asia)
63662105(Africa&MiddleEast)63639530(Warehouse Equipment)
63639531(Wheel loader)
FAX:(86551)63639966
WEBSITE:<http://www.helichina.com>
Email:heli@helichina.net

我们的实力 Our Strength

HELI

安徽合力股份有限公司系安徽叉车集团有限责任公司核心控股子公司，1996年在上海证券交易所上市，注册资本6.168亿元，是我国目前规模大、产业链条完整、综合实力强的工业车辆研发、制造与出口基地。

Anhui Heli Co. Ltd., a core holding subsidiary of the forklift group, was listed in Shanghai Stock Exchange in 1996 and its registered capital is 616.8 million. It is presently an industrial vehicle research and development, manufacturing and export base in China with large scale, complete product line and industrial chain and strong overall strength.



行业地位 Position in industry

公司的叉车和零部件产品在国内同行业中规格最全、规模最大，叉车的综合性能处于国内同行业龙头地位，部分产品达到国际先进水平。各项主要经济指标已连续多年高居全国同行业之首。

We have the most completed forklift and parts among the same industry in China; The performance of the truck stays at the leading position among the same industry in China and some products reach to international advanced level. Major economic indicators rank top 1 for consecutive many years among the same industry in China.



科研实力 Scientific research ability

公司技术中心是1995年由国家发改委等四部委首批认定的100家国家级“企业技术中心”之一。学科齐全，基础设施雄厚。

The technical center of the company was honored as one of the first batch of "enterprise technical center at national level" in 1995 by National Development and Reform Commission together with other three ministers and commissions. We have complete research sectors and rich infrastructure.

我们的实力 Our strength



重要奖项 Key awards

近5年，公司自主研发的新产品获得6项科技进步奖，安徽省科技进步一等奖2项，机械工业科技进步二等奖一项。

In recent 5 years, New products with our independent research and development win 6 awards for scientific and technological advancement, 2 first prize wards for scientific and technological advancement in Anhui Province and 1 second prize award for scientific and technological advancement in mechanical industry.

全球合力 HELI around the world

2006年，叉车集团进入世界工业车辆行业10强，2011年位居国际第8位。公司在国内拥有自主营销网络，建立了24个省级营销网络和400多家二级代理销售服务网点，拥有完善、健全的服务体系。在海外80个国家和地区建立了海外代理网络，产品销往世界140个国家和地区，其中欧美地区占公司出口量的60%

HELI ranked top 10 among the world industrial truck sector in 2006 and top 8 from 2011. HELI has autonomous sales network and sound service system with 24 provincial sales network and more than 400 second level dealers in domestic and in overseas, HELI sets up sales network in more than 80 countries and regions and our products sell to 140 countries and regions over the world among which 60% of our products are sold to Europe and America.

品牌理念 Brand concept

合力以进入世界工业车辆五强为近期目标，立志成为国际一流、基业长青的企业。

百年合力是我们的理念定义，世界五强是我们量化的目标。合力人一步一个脚印，不断拼搏进取，逐渐把企业做大做强。进入新世纪以来，合力进入了一个飞速发展的时期，在2006年成功跻身世界叉车行业十强。今天我们提出跻身世界叉车行业第一集团，进入世界五强的目标，是对我们辉煌的历史的传承，更是合力人永不停息的脚步！

With being world top 5 as the short-term goal, HELI is committed to be a world first-class and over-lasting enterprise. Centennial HELI is our definition in thought and world top 5 is our quantized goal. HELI people work steadily and keep forging ahead to make our enterprise bigger and stronger. HELI has gone to a fast developing time since the new century. In 2006, HELI ranked world top 10. Now, we make our decision to be world top 5 which is not only a heritage of our glorious history but also our never-ending hard effort.

重型(港口)机械制造基地 heavy machine manufacturing base

依托公司强大的科研平台及制造能力，合力公司研发、生产、销售系列齐全，品种多样的重型叉车、正面吊、集装箱空箱堆高机，为客户提供专业的物流搬运解决方案。

重型叉车：12t-18t、20-25t、28-32t、35t、38-40t、42-46t

正面吊：标准型正面吊、重载型正面吊

堆高机：2-3层、5-6层、7-8层

Based on HELI strong scientific research platform and manufacturing ability, HELI research and develop, produce and sale heavy trucks, reach stacker and empty container handler with completed series and various types to provide customers with special material handling solutions.

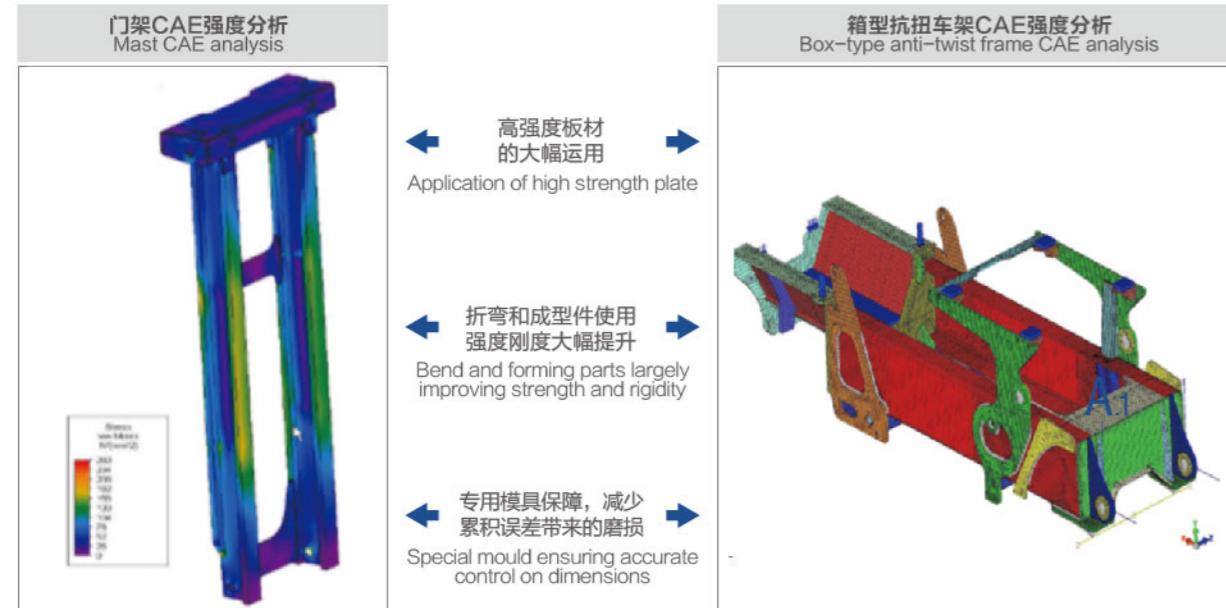
Heavy truck: 12t-18t, 20-25t, 28-32t, 35t, 38-40t, 42-46t

Reach stacker: standard type reach stacker, heavy type reach stacker

Container handler :2-3 layer, 5-6 layer, 7-8 layer

A. 持久耐用 Enduring and durable

A.1 牢固耐用的结构设计 Durable structure design



A.2 便捷高效的点检维护 Easy and high efficient daily inspection

▶ 驾驶室电动倾翻系统 (倾翻驾驶室车型标配) Cab electric tilting system (Tilting cab type forklift standard)

自动倾翻系统使得内部维护方便快捷, 电动辅助液压驱动倾翻油缸使驾驶室向右侧倾翻大约60°, 易于维修保养。
Automatic tilting system facilitates interior maintenance; Hydraulic drives tilting cylinder with electric assistance making cab tilt 60° right ward which makes maintenance easy.

▶ 大角度掀翻机罩 Engine hood with large opening angle

敞开式发动机机罩, 保证快速高效的维护, 通过两个自锁式气弹簧安全便捷打开机罩。
Open type engine hood which can be open through two self-lock spring ensures easy and high efficient maintenance.



▶ 倾翻驾驶室或挑高驾驶室(选配) Tilting cab or thermocline cab (option)

手自一体倾翻机构可使驾驶室向右侧倾翻可达60° ; 挑高式结构可将驾驶室抬高500mm以上, 便于维修保养;
Tilting cab can be tilt rightward up to 60° automatically or manually; Thermocline structure can lift cab by 500mm and it is easy for maintenance.

▶ 大角度掀翻机罩或滑移机罩 Engine hood with large opening angle or sliding engine hood

敞开式发动机机罩, 最大程度的释放维保空间
Open type engine hood provides large maintenance space.

▶ 油水加注检查便捷 Easy liquid adding and check

冷却液加注检查、机油加注检查、液压油油位检查等更加便捷
Cooling liquid adding and check, engine oil adding and check and hydraulic oil level check become easier.

▶ 空滤滤芯更换便捷 Easy air cleaner filter replacement



A3 防护性能提升 Improved protection performance

- 油缸防护套 (选配)
- 高防尘防水等级电动倾翻按钮
- 前桥防尘透气帽
- 变速箱防尘透气帽
- Oil cylinder protection sleeve (optional)
- Electric tilting button with high dust-proof and water-proof degree
- Front axle dust proof vent
- Transmission box dust proof vent

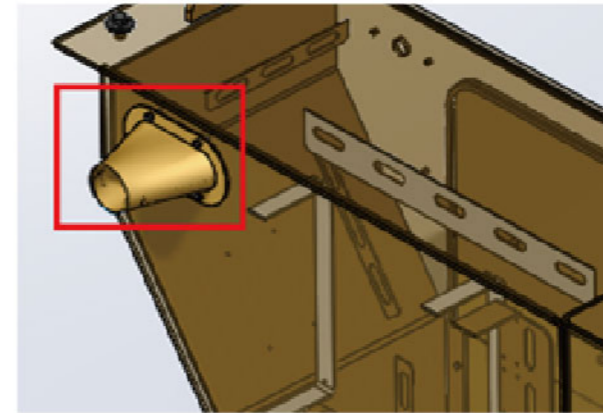
- 电气柜防尘套
- 进回油管用钢丝缠绕管替代胶管
- 防尘防水接插件
- 线束采用全新德标
- Dust-proof sleeve for electric cabinet
- Steel wire wound hoses are used and safety level is improved greatly.
- Dust-proof waterproof connectors
- Harness meets German standard



■ 油缸防护套 (选配): 此护罩有助于防止外物造成的油缸损伤
Oil cylinder protection sleeve(optional): it is used to protect cylinder damaged from foreign matters



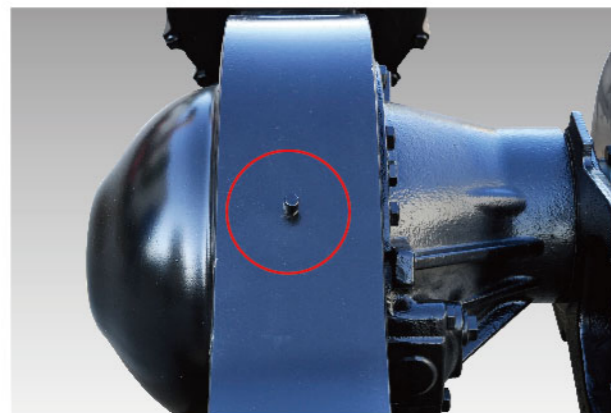
■ 高防尘防水等级电动倾翻按钮: 防护等级IP67
Electric tilting button with high dust-proof and water-proof degree: protecting degree: IP67



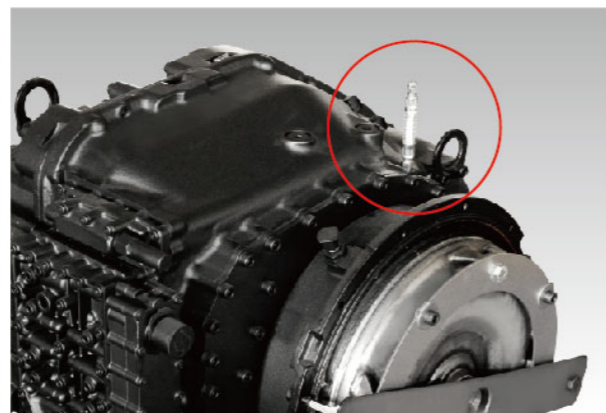
■ 电气柜防尘套
Dust-proof sleeve for electric cabinet



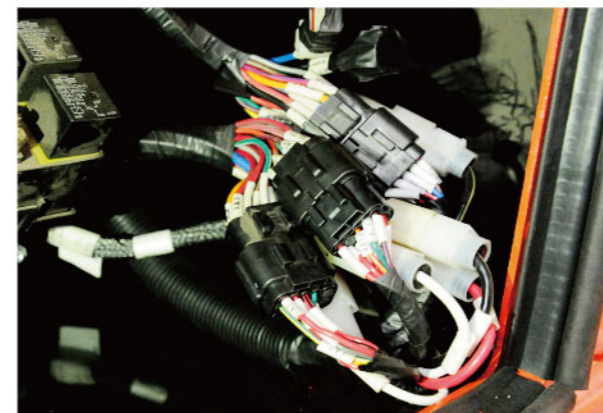
■ 进回油管用钢丝缠绕管替代胶管; 安全等级大幅提升
Steel wire wound hoses are used and safety level is improved greatly.



■ 前桥防尘透气帽
Front axle dust proof vent



■ 变速箱防尘透气帽
Transmission box dust proof vent



■ 防尘防水接插件: 防护等级IP65
Dust-proof waterproof connectors: protective class IP65



■ 线束采用全新德标, 耐温极限大幅提升 (-40°C-105°C)
Harness meets German standard and its temperature resistance ability is largely improved (-40°C-105°C)

A.4 冷却效率提升 Improved cooling efficiency

风道优化设计
合力专用冷却介质
发动机原装风扇

Optimal designed channel
HELI special cooling medium
Engine original fan



▶ 风道优化设计

散热器的优化布置及风道的特别设计，使冷却系统进风出风阻力很小，有效防止空气涡流回流，大幅提升散热效率。

▶ Optimal designed channel

Optimal designed radiator and channel make cooling system have small resistance, avoid air flowing back effectively and improve cooling efficiency.

▶ 发动机原装风扇

匹配性好，工作稳定，散热功率大。

▶ Engine original fan

Good matching ability, stable working, large cooling power

▶ 高强度铝制散热器

高强度板翅结构—不易产生裂缝
外表面注塑处理—耐腐蚀抗氧化

▶ High strength aluminum radiator

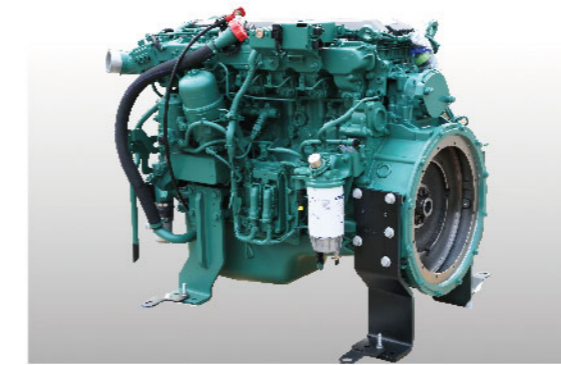
High strength fin type structure will not deform or crack easily.
Exterior injection molding treatment—anti-corrosion and oxidation resistance



B. 环保节能 ENERGY-SAVING

B.1 高效匹配 动力强劲 High efficient matching, forceful power

- ▶ 选用原装进口VOLVO发动机，ZF或DANA变速箱。
- ▶ VOLVO engine, ZF or DANA transmission box are assembled on the truck.



B.2 液压负载变量（35-46t）或定量（20-32t）系统

Hydraulic dynamic load variable control system(35-46t)
or constant displacement system (20-32t)

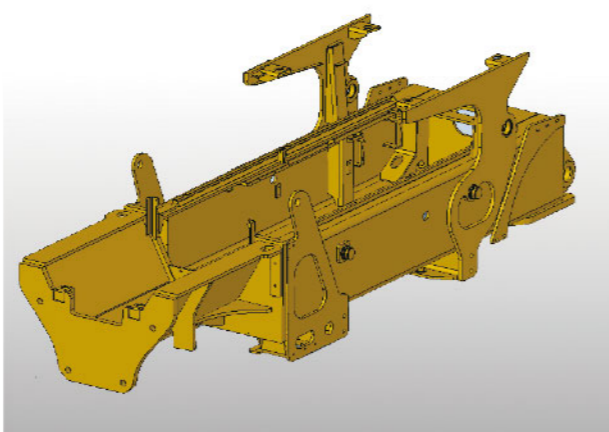
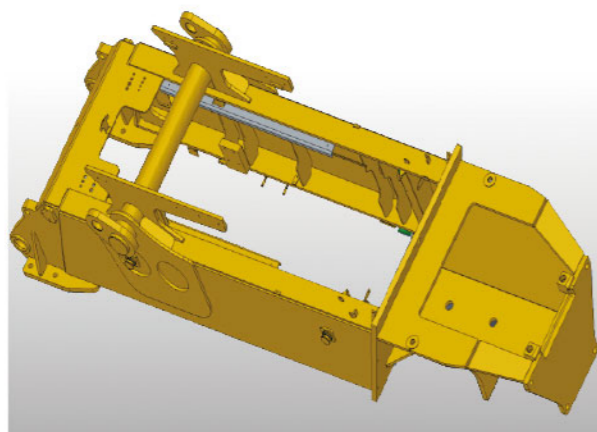
- ▶ 变量系统可根据驾驶员工作习惯及负载情况自动调节油泵排量，实现高精度流量控制，节能降耗效果显著；定量系统结构简单，技术成熟，系统可靠，成本较低。
- ▶ It can adjust oil pump displacement automatically according to operator habit and load condition to achieve high precision flow control and energy saving.
Constant displacement system has simple structure, mature technology, reliable system and low cost.

B.3 轻量化设计 Light type design

- ▶ 后配重不开风道，配重利用率提升约5%，整车自重降低
- ▶ 轻量化设计，优化结构，更轻更强
- ▶ Rear counter weight has no air channel and counter weight use ratio is 5% increased and thus truck service weight is reduced.
- ▶ Light type design optimizes structure and the truck is lighter and more stable.



- 后配重无风道设计 Counter weight no air channel design
后配重无须开孔做风道设计，提高了配重利用率，降低整车自重，更加节能。
Rear counter weight has no air channel and counter weight use ratio is increased and thus truck service weight is reduced.

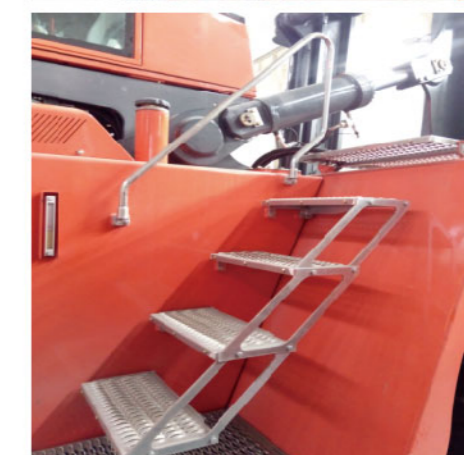
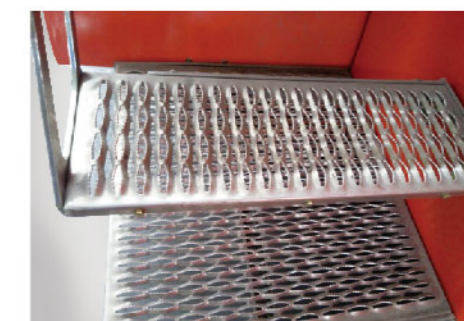


- ▶ 轻量化设计
高强度板材运用；
多年的数据积累及精细的CAE分析；
不断优化的结构设计；
- ▶ Light type design
Application of high strength material
Years of data accumulation and accurate CAE analysis
Constant structure optimization

C. 舒适便捷 COMFORTABLE AND CONVENIENT

C.1 上下车便捷 Easy get on-off

- ▶ 防滑踏板设计
防滑式铝质踏板为进出驾驶室提供优异的防滑性能
辅助扶手
坚固耐用
- ▶ Anti-skid pedal
Anti-skid aluminous pedal has good anti-skid performance.
Auxiliary handrail
Solid and durable
- ▶ 大尺寸上车踏板和扶手
敞开式台阶为进出车辆提供便捷和安全
- ▶ Large getting on off pedal and handrail
Open type steps make easy and safe get on-off.



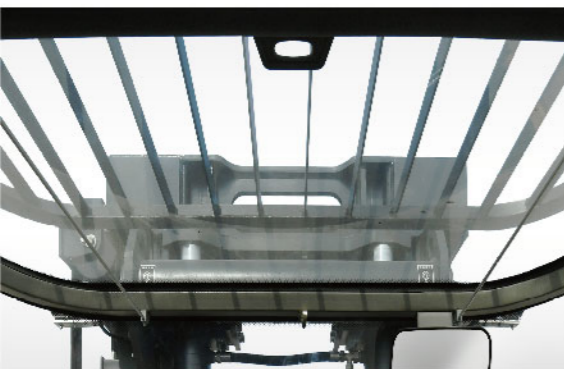
C.2 更小的转弯半径 Smaller turning radius

- ▶ 紧凑的车身设计
优化的转向角度
- Compact frame design
Optimized steering angle

C.3 极佳的视野 Superior view



- ▶ 卓越的前方视野
前玻璃采用大圆弧多曲率造型，提升前方视野张角10°
- ▶ Superior front view
Front glass with large arc is used and front view field angle is 10° increased.



- ▶ 卓越的上方视野
驾驶室顶置大面积玻璃，抬头即可见
- ▶ Superior top view
Large glass is used on the top of cab.

- ▶ 左右侧窗玻璃
左右侧门设置4块窗口玻璃，360° 全方位照顾您的眼界

- ▶ Glass for left and right side window
4 pieces of glass is used on left and right door to ensure 360° view.



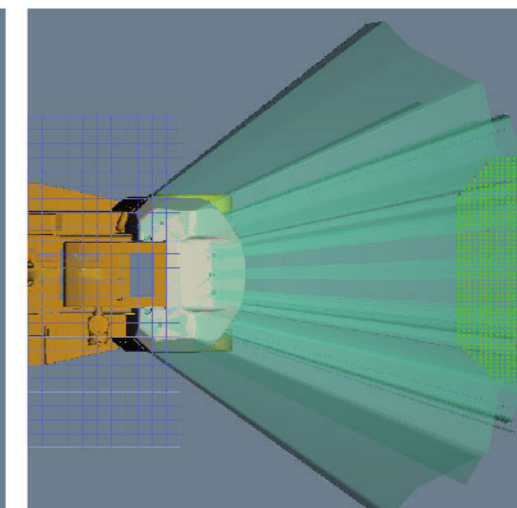
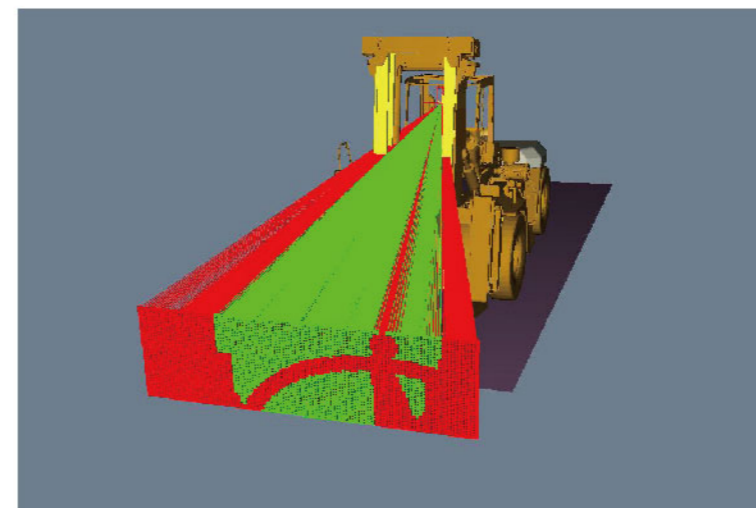
- ▶ 卓越的后方视野
驾驶室后方设置大面积玻璃，视野极佳
- ▶ Superior rear view
Large glass is used at the rear end of cab.



- ▶ 后视镜系统 (option)
后方倒车视野可实时显示
- ▶ Rear vision system
Truck real time rear view can be displayed when backward.



- ▶ 前方视野校核
后方视野校核
- ▶ Front view check
Rear view check



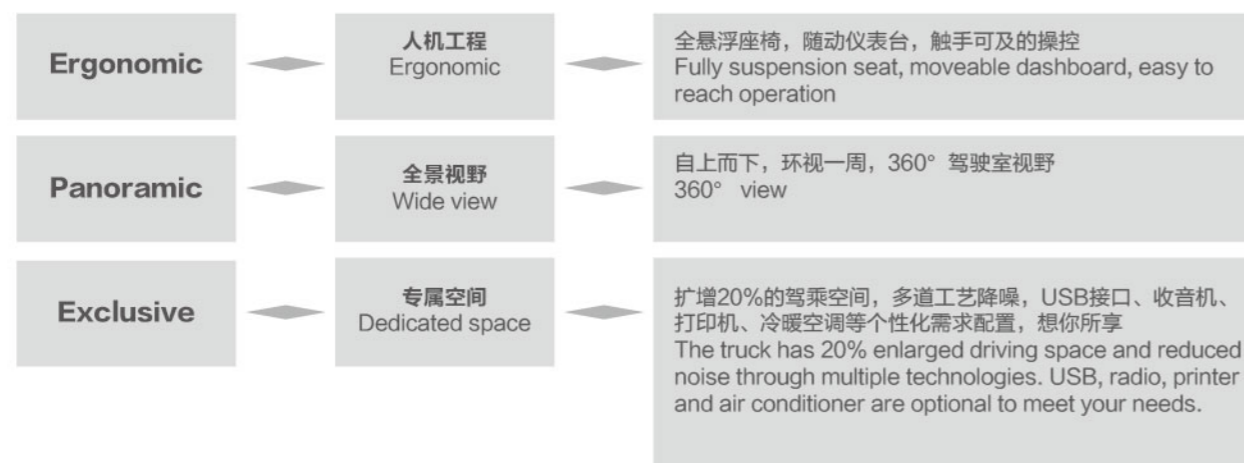


- ▶ **全悬浮座椅**
可调阻尼减震设计，托起你应有的重量，享你应有的平稳
- ▶ **Fully suspension seat**
Adjustable damping shock reducing design not only bears your weight but also provides steady driving experience.

- ▶ **称重系统 (选配)**
通过检测液压压力来准确测量载荷
- ▶ **Weighting system(optional)**
Weight can be measured accurately through checking hydraulic pressure.

C.4 更舒适的驾驶体验 More comfort driving experience

全新360° 视野专属驾驶室
Special cab with 360° view



- ▶ **倒车雷达 (选配)**
六点探头布置，确保安全驾驶
六点监控，分布合理
监控范围更广

- ▶ **Backward radar(optional)**
Six probes ensure driving safety.
Monitor is achieved through reasonable distributed 6 points.
Larger monitoring range



D. 安全高效 SAFE AND EFFICIENT

D.1 稳定性更好 Better reliability

- ▶ **更小前悬**
重心后移
门架结构设计更加紧凑
- ▶ **重心后移**
动力总成后置
冷却系统后置
配重不开风道孔
- ▶ **Smaller front overhang**
Retroposition of center of gravity
More compact mast structure
- ▶ **Retroposition of center of gravity**
Retroposition of power system
Retroposition of cooling system
No air channel on the balance weight



- ▶ **整机工作监控、指示仪表**
人机工程优化布置，观测一面了然，操纵触手可及

- ▶ **Truck working monitoring and condition display meter**
Ergonomic optimized layout makes reading and operation easy.



- ▶ **踏板优化布置**
人机工程优化布置踏板位置，减少长时间工作疲劳，轻松驾驭工作

- ▶ **Pedal optimized layout**
Optimized pedal reduces fatigue during long time working.



- ▶ **可调节方向盘**
根据操作者的习惯来调节方向盘，轻便灵活的转向大大减少工作强度

- ▶ **Adjustable steering wheel**
Steering wheel can be adjusted according to operator habit and easy and flexible steering largely reduces your work.



- ▶ **灵活的操控手柄**
使用最小的操控力就能达到精确的、安全的和富有成效的控制

- ▶ **Flexible control knob**
Accurate, safe and effective control can be achieved through small operation force.

D.2 OPS(操作者存在感应系统)

- ▶ **整车OPS系统 (可选)**
操作人员离开座位时，整车自动断开动力，无行走
- ▶ **门架OPS系统 (可选)**
操作人员离开座位时，门架锁死，无动作
- ▶ **OPS for the whole truck (optional)**
Truck power will be cut automatically and the truck can not be operated when operator is away from seat.
- ▶ **OPS system for mast (optional)**
The mast is locked and can not be operated when operator is away from seat.



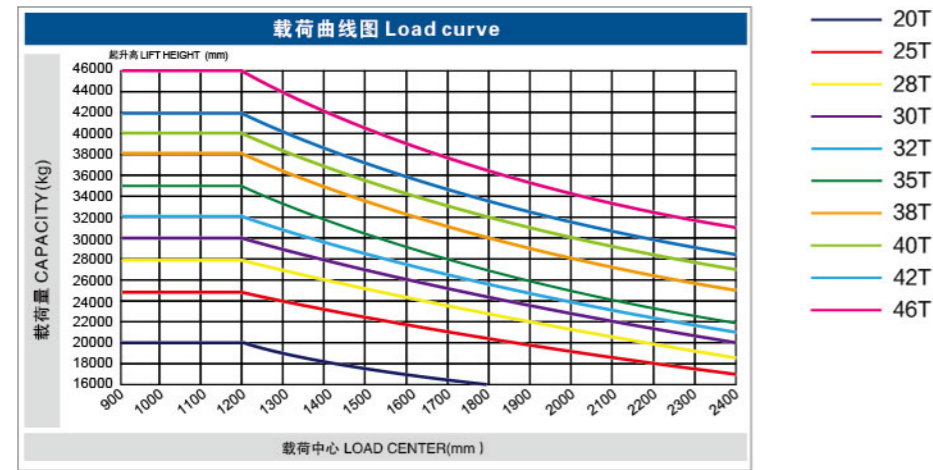
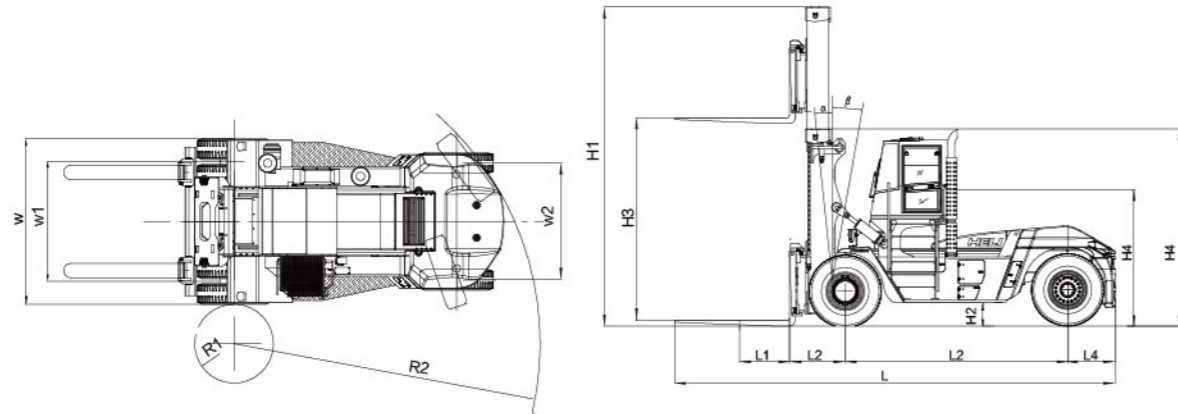
D.3 湿式驱动桥 Wet type drive axle

- ▶ **免维护**
特殊的结构设计和制动原理，防尘防水，为您节约维护成本
- ▶ **制动安全可靠**
满足长时间高强度短距离频繁制动作业需求。
- ▶ **Maintenance free**
Specially designed structure and brake principle provides anti-dust and anti-water function and saves your maintenance cost.
- ▶ **Safe and reliable brake**
Working requirements such as Long time, high duty, short distance or frequent brake can be satisfied.

E. 技术参数 Technical parameter

性能参数 Technical parameters													
型号 Model	单位 Unit	CPCD200	CPCD200 (倾翻驾驶室)	CPCD250	CPCD250 (倾翻驾驶室)	CPCD280	CPCD300	CPCD320	CPCD350	CPCD380	CPCD400	CPCD420	CPCD460
额定载荷 Rated load	t	20	20	25	25	28	30	32	35	38	40	42	46
整车质量 The mass	kg	33200	33200	36500	36500	40000	42000	43000	46000	51600	53600	56000	58600
最大起升速度 (满载/空载) Maximum lifting speed (loaded/unloaded)	mm/s	280/310	280/310	280/310	280/310	280/310	280/310	280/310	240/260	280/340	280/340	240/320	240/320
最大行驶速度 (满载/空载) Maximum speed (loaded/unloaded)	km/h	23/26	23/26	23/26	23/26	22/25	22/25	22/25	22/25	23/26	23/26	23/26	23/26
爬坡能力 (满载) Gradeability (loaded)	%	27	27	27	27	27	27	27	27	36.6	35	30	30
驾驶室噪音 Noise in the cab	dB	78	79	78	79	78	78	78	79	76	76	76	76

尺寸参数 Size parameters													
型号 Model	单位 Unit	CPCD200	CPCD200 (倾翻驾驶室)	CPCD250	CPCD250 (倾翻驾驶室)	CPCD280	CPCD300	CPCD320	CPCD350	CPCD380	CPCD400	CPCD420	CPCD460
总长L Overall length		8742	8742	8742	8742	9200	9200	9200	9200	9870	9870	10370	10370
总宽W Overall width	mm	3040	3040	3040	3040	3460	3460	3460	3460	4120	4120	4120	4120
总高H Overall height	mm	3995	3555	3995	3555	4120	4120	4120	4120	4600	4600	4850	4850
载荷中心距L1 Load center distance	mm	1200	1200	1200	1200	1200	1200	1200	1200	1200	1200	1200	1200
轴距L2 Wheelbase	mm	4250	4250	4250	4250	4650	4650	4650	4650	5000	5000	5500	5500
前悬距L3 Front overhang	mm	1102	1102	1102	1102	1162	1162	1162	1162	1270	1270	1270	1270
后悬距L4 Rear overhang	mm	990	990	990	990	990	990	990	990	1160	1160	1160	1160
最小离地间隙H2 Minimum underground clearance	mm	280	280	280	280	275	275	275	275	350	350	390	390
座椅高度H4 Seat height	mm	2793	2473	2793	2473	2850	2850	2850	2530	2590	2590	2620	2620
内转弯半径R1 The turning radius	mm	775	775	775	775	824	824	824	824	936	936	936	936
外转弯半径R2 Turning radius(outside)	mm	5920	5920	5920	5920	6395	6395	6395	6395	6950	6950	7518	7518
前轮距W1 Front track	mm	2200	2200	2200	2200	2490	2490	2490	2490	3090	3090	3090	3090
后轮距W2 Rear track	mm	2510	2510	2510	2510	2440	2440	2440	2440	2840	2840	2840	2840
门架高度 (收缩H/伸出H1) Mast height (retracted/extended)	mm	3995/5995	3495/4995	3995/5995	3495/4995	4120/6120	4120/6120	4120/6120	4120/6120	4600/6600	4600/6600	4830/6830	4830/6830
门架起升距离H3 Mast lifting height	mm	4000	3000	4000	3000	4000	4000	4000	4000	4000	4000	4000	4000
门架倾角 (前倾 α /后倾 β) Mast tilting angle (forward/backward)	deg	6/10	6/10	6/10	6/10	6/10	6/10	6/10	6/10	6/10	6/10	6/10	6/10
货叉尺寸 (长 \times 宽 \times 厚) Fork dimension (length*width*thickness)	mm	2440 \times 250 \times 110	2440 \times 250 \times 110	2440 \times 250 \times 110	2440 \times 250 \times 110	2440 \times 300 \times 115	2440 \times 300 \times 115	2440 \times 300 \times 115	2440 \times 300 \times 120	2440 \times 300 \times 145	2440 \times 300 \times 145	2440 \times 300 \times 145	2440 \times 300 \times 145
货叉调节范围 (货叉外侧) Fork adjusting range (Outside of Fork)	mm	820-2700	820-2700	820-2700	820-2700	920-2850	920-2850	920-2850	920-2850	1250-2850	1250-2850	1250-2850	1250-2850



注：
载重中心是从货叉前端面计算起，标准载重中心的基点是指负荷边长为2400mm的立方体中心位置。当门架前倾、使用非标准货叉或装载超过正常宽度的负荷时，将会承载量减少。通过负荷曲线图，能及时地了解各种载重中心时的承载能力。

Note:
Load center is measured from the fork front. A standard load center point refers to the center of a cubic of side length of 2400mm. When gantry tilts forward, the bearing capacity will reduce in case of use of non-standard fork or loading a load exceeding the normal width,. Load curve tells you bearing capacity of various load centers in time.

CPCD200-250 基本型门架 Wide view mast

门架类型 Mast name	最大起升高度 Max.fork Height (mm)	门架全高 Overall height (mm)	倾角(前/后) Tilt angle (F/B)	备注 Remarks
M400	4000	3995	6°/10°	标准型 standard equipment
M450	4500	4245	6°/10°	
M500	5000	4495	6°/10°	
M550	5500	4745	6°/10°	
M600	6000	4995	6°/10°	
M650	6500	5245	6°/10°	
M700	7000	5495	6°/10°	
M750	7500	5745	6°/10°	
M800	8000	5995	6°/10°	

CPCD280-350 基本型门架 Wide view mast

门架类型 Mast name	最大起升高度 Max.fork Height (mm)	门架全高 Overall height (mm)	倾角(前/后) Tilt angle (F/B)	备注 Remarks
M400	4000	4120	6°/10°	标准型 standard equipment
M450	4500	4370	6°/10°	
M500	5000	4620	6°/10°	
M550	5500	4870	6°/10°	
M600	6000	5120	6°/10°	
M650	6500	5370	6°/10°	
M700	7000	5620	6°/10°	
M750	7500	5870	6°/10°	
M800	8000	6120	6°/10°	

CPCD380-400 基本型门架 Wide view mast

门架类型 Mast name	最大起升高度 Max.fork Height (mm)	门架全高 Overall height (mm)	倾角(前/后) Tilt angle (F/B)	备注 Remarks
M400	4000	4600	6°/10°	标准型 standard equipment
M450	4500	4850	6°/10°	
M500	5000	5100	6°/10°	
M550	5500	5350	6°/10°	
M600	6000	5600	6°/10°	
M650	6500	5850	6°/10°	
M700	7000	6100	6°/10°	
M750	7500	6350	6°/10°	
M800	8000	6600	6°/10°	

CPCD420-460 基本型门架 Wide view mast

门架类型 Mast name	最大起升高度 Max.fork Height (mm)	门架全高 Overall height (mm)	倾角(前/后) Tilt angle (F/B)	备注 Remarks
M400	4000	4830	6°/10°	标准型 standard equipment
M450	4500	5080	6°/10°	
M500	5000	5330	6°/10°	
M550	5500	5580	6°/10°	
M600	6000	5830	6°/10°	
M650	6500	6080	6°/10°	
M700	7000	6330	6°/10°	
M750	7500	6580	6°/10°	
M800	8000	6830	6°/10°	

注：门架可选配二级全自由门架 Note: Duplex full free mast is optional

- 合力产品不断更新和改进中，合力保留在没有事先告知用户的情况下，更改整体参数及设计的权利。
- 文中插图不一定是该机型的标准款，插图中产品配置和外观颜色与实际机型存在差异，以实物为准。
- Our products are constantly updated and improved. Parameters and design are subject to change without prior notice.
- The configuration and color of the products in figures may be different from the actual delivered model. Please in kind prevails.

F. 配置表 Configurations

整车配置 Vehicle configuration															
叉车型号 Forklift truck model		CPCD200 -VZ2-12III	CPCD200 -VD1-12III	CPCD250 -VZ2-12III	CPCD250 -VD1-12III	CPCD280 -VZ2-12III	CPCD300 -VZ2-12III	CPCD320 -VZ2-12III	CPCD350 -VZ1-12III(IV)	CPCD380 -VD2-12III	CPCD400 -VD2-12III	CPCD420 -CD-12III	CPCD420 -VD2-12III	CPCD460 -CD-12III	CPCD460 -VD2-12III
发动机 Engine	品牌 Brand	VOLVO	VOLVO	VOLVO	VOLVO	VOLVO	VOLVO	VOLVO	VOLVO	VOLVO	VOLVO	CUMMINS	VOLVO	CUMMINS	VOLVO
	型号 Model	TAD851VE	TAD851VE	TAD851VE	TAD851VE	TAD851VE	TAD851VE	TAD851VE	TAD851(871)VE	TAD1151VE	TAD1151VE	QSM11	TAD1151VE	QSM11	TAD1151VE
	额定功率 (kW/rpm) Rated output (kW/RPM)	185/2200	185/2200	185/2200	185/2200	185/2200	185/2200	185/2200	185/2200	265/2100	265/2100	254/1800	265/2100	254/1800	265/2100
	最大扭矩 (Nm/rpm) Peak torque (Nm/RPM)	1160/1350	1160/1350	1160/1350	1160/1350	1160/1350	1160/1350	1160/1350	1160/1350	1785/1316	1785/1316	1708/1400	1785/1316	1708/1400	1785/1316
	排放标准 Emission standards	EU Stage III	EU Stage III	EU Stage III	EU Stage III	EU Stage III	EU Stage III	EU Stage III	EU Stage III	EU Stage III(IV)	EU Stage III	EU Stage III	EU Stage III	EU Stage III	EU Stage III
变速箱 Transmission	型号 model	ZF3WG211	DANA32000	ZF3WG211	DANA32000	ZF3WG211	ZF3WG211	ZF3WG211	ZF3WG211	DANA36000	DANA36000	DANA TE27	DANA TE27	DANA TE27	DANA TE27
驱动桥 Drive axle	型号 model	Kessler	Kessler	Kessler	Kessler	Kessler	Kessler	Kessler	Kessler	Kessler	Kessler	Kessler	Kessler	Kessler	Kessler
轮胎 Tire	尺寸 size	14.00-24	14.00-24	14.00-24	14.00-24	16.00-25	16.00-25	16.00-25	16.00-25	18.00-25	18.00-25	18.00-25	18.00-25	18.00-25	18.00-25
辅助性配置 Supporting configuration	倒车雷达 Reversing radar	●	●	●	●	●	●	●	●	●	●	●	●	●	●
	倒车影像 Reversing image	●	●	●	●	●	●	●	●	●	●	●	●	●	●
	称重系统 Weighing system	○	○	○	○	○	○	○	○	○	○	○	○	○	○
	整车ops The vehicle ops	○	○	○	○	○	○	○	○	○	○	○	○	○	○
	门架ops The door frame ops	○	○	○	○	○	○	○	○	○	○	○	○	○	○
液压系统 The hydraulic system	定量系统 Quantitative system	●	●	●	●	●	●	●	/	/	/	/	/	/	/
	变量系统 Variable system	/	/	/	/	/	/	/	●	●	●	●	●	●	●
空调选项 Airconditioning options	冷暖空调 Air conditioning	●	●	●	●	●	●	●	●	●	●	●	●	●	●
	单冷空调 Used by air conditioning	○	○	○	○	○	○	○	○	○	○	○	○	○	○
轮胎选项 Tyre options	全充气胎 Pneumatic tyre	●	●	●	●	●	●	●	●	●	●	●	●	●	●
	全实心胎 Solid tyre	○	○	○	○	/	/	/	/	/	/	/	/	/	/
	前实心后充气 Solid tyre (front), pneumatic tyre (rear)	○	○	○	○	/	/	/	/	/	/	/	/	/	/
	前充气后实心 Pneumatic tyre (front), solid tyre (rear)	○	○	○	○	/	/	/	/	/	/	/	/	/	/
驾驶室 Cab	挑高驾驶室 Thermocline cab	●	/	●	/	●	●	●	/	●	●	●	●	●	●
	倾翻驾驶室 Tilting cab	/	●	/	●	/	/	/	●	/	/	/	/	/	/

●-标配项 ○-选配项 /-非配项
●-Standard item ○-Optional item /-Not used

G. 选配表 Configuration

属具选配 Optional attachments



- 侧移调距叉(标配)
同时具备货叉调距与侧移功能，提高作业效率
- Side shifting fork positioner (standard)
It has both space adjusting and side shifting functions to improving working efficiency.



- 货叉套
有效延长货叉，适用于较大外形货物的搬运
- Fork extension
It effectively extends fork and it is suitable for large size handling.



- 串杆
适用于钢卷、线材等成卷的货物
- Carpet boom
It is suitable for roll type goods such as steel roll, wire roll and so on.



- 吊臂
起吊货物安全高效
- Crane jib
It is safe and high efficient to lift goods.



- 管线材吊具
适用于成捆的钢筋、钢管等货物的吊运
- Slings
It is suitable for goods in bundle such as rebar, steel tube and so on.

合力智能车队管理系统(选配) HELI smart fleet management system (optional)

- | | |
|------------|---|
| • 车辆定位 | • Vehicle positioning |
| • 远程诊断 | • Remote diagnosis |
| • 远程监控 | • Remote monitoring |
| • 维保提示 | • Maintenance reminder |
| • 电池管理 | • Battery management |
| • 统计报表 | • Statistical form |
| • 车辆管理 | • Vehicle management |
| • 身份识别(选配) | • Identification recognition (optional) |
| • 称重管理(选配) | • Weight management (optional) |

